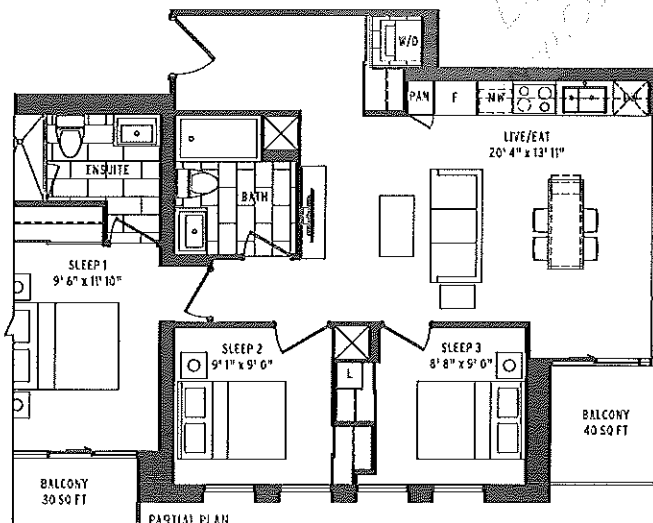
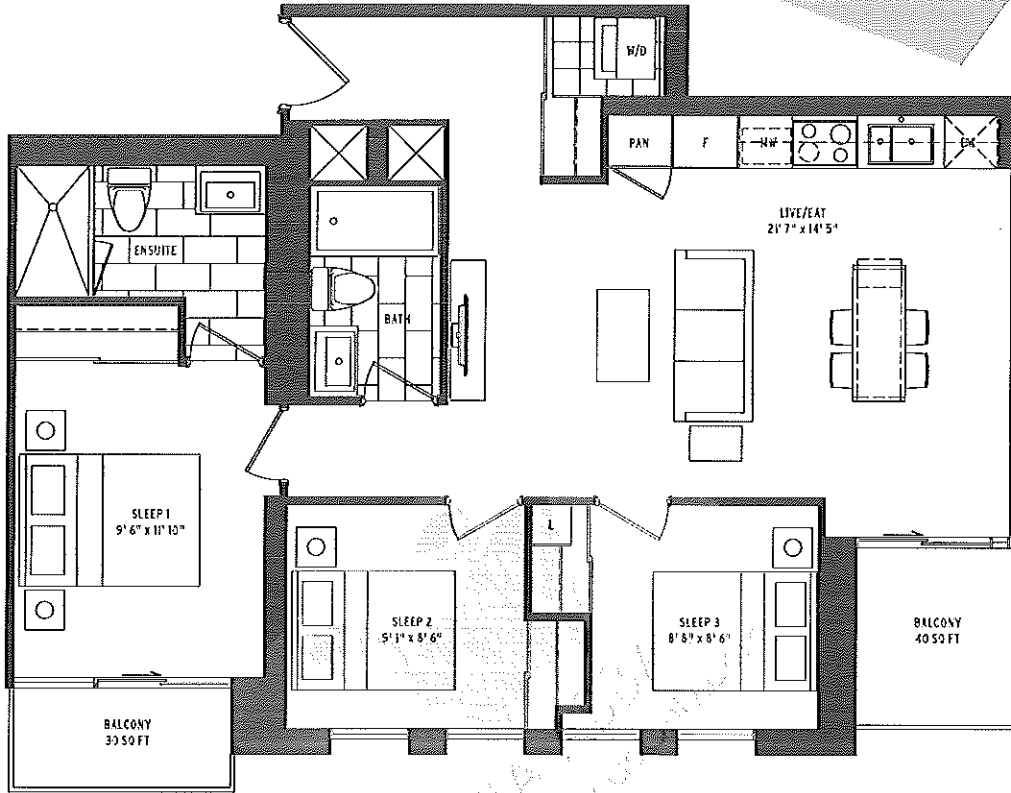
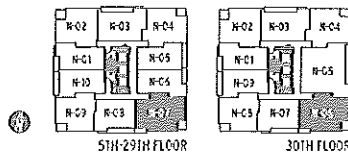


ACCELERATE



PARTIAL PLAN
FLOORS 5-8 ONLY



- 3 BEDROOM
- INTERIOR SQ FT: 941
- EXTERIOR SQ FT: 70
- TOTAL SQ FT: 1011

All dimensions, square footages, drawings, renderings and floorplans are approximate and are subject to change without notice. All dimensions and square footages may vary from that stated here. Floor plans are not to scale and may be true to scale or not to scale. Window and door locations, sizes and types may vary without notice. All dimensions are for construction purposes and do not include fixtures. The patterns may vary. Furniture and fixtures included. Before you receive your floor plan, please note that the floor plan is approximate, not included in the area and may vary depending on floor level, location and other factors, and is subject to change without notice. E.S.O.E. January 3, 2017.